



Scouts
QUEENSLAND



CAPRICORN DISTRICT SCOUTS

Rules for the use of

Seeonee Park Scout Campsite

Contents

Simplified Map.....	3
Introduction.....	4
Access and Roads.....	5
Bookings.....	5
Fees:.....	5
Buildings and Amenities.....	6
General Conditions of use:.....	6
Camp Petrel.....	6
Camp Petrel Dorms.....	6
Rudd Hut (behind Camp Petrel) Access by request.....	7
Brown Hut.....	7
Brown Hut Toilet Showers.....	7
Arunga Shed.....	7
Ablutions.....	8
Campsites.....	8
Drugs and Alcohol.....	8
Emergency Procedures.....	9
Firearms.....	9
Plants and Animals.....	10
Rental Property at the front of Seeonee Park.....	10
Incidents.....	10
Noise.....	10
Parking.....	10
Pets.....	11
Refuse\Rubbish.....	11
Water.....	11
Appendix:.....	13

Simplified Map



SEEONEE PARK SCOUT CAMPSITE



SEEONEE PARK SCOUT CAMPSITE IS PRIVATE PROPERTY PLEASE CONTACT CARETAKER - PH 0488008897

Detailed Maps in Appendix

Introduction

Capricorn District welcomes you all to Seeonee Park Scout Campsite and we wish you a safe and happy time during your stay with us.

We feel it is a great camping and activity center and we are very proud of its condition and facilities.

Seeonee Park Scout Campsite consists of 660 Acres of natural bushland and is freehold property owned by Scouts Australia QLD Branch Inc and administered by the Capricorn District.

It is a condition of entry that all personnel entering, using and/or camping on Seeonee Park Scout Campsite will comply with the following rules.

Management has the authority to ask those who choose to disregard these rules to vacate the property and/or to advise the police as appropriate.

We do not have a resident Caretaker on site. Capricorn District along with members and volunteers are charged with the responsibility for the safety and protection of Seeonee Park Scout Campsite.

District Commissioner Scott Neill is the Leader in Charge.

All persons wishing to enter the property must first obtain permission from the District Commissioner or their nominated contact person and make the purpose of their entry clear.

Everything on this property is produced and maintained by volunteers so please help us to maintain high standards by complying with the following rules with commonsense and thoughtfulness

Thank you for choosing to use Seeonee Park Scout Campsite and we trust you have an enjoyable and safe stay.

Access and Roads

- Speed limit in the park roads is 10 kph – always remember there may be children present and caution must be exercised at all times.
- All gates must be left as they are found (if you opened it, please close it behind you)
- Vehicle traffic is restricted to our road from the front gate to the Camp Petrel and back to Brown Hut, these roads are marked on the Seeonee Park Scout Campsite Map.
- Under no circumstances are vehicles permitted to be driven anywhere other than these designated roadways, including on the parade ground or terrace, except for service vehicles to deliver activity materials in dry weather conditions only.
- No vehicles are permitted on the back trails except for authorised service vehicles, emergency vehicles and other authorised activity vehicles.
- No “off roading” or inappropriate use of Seeonee Park Scout Campsite by any vehicle (4WDs, Trail Bikes, etc) will be tolerated at any time. Offenders will be asked to vacate the property and/or the police will be advised.

Bookings

Bookings can be done through email to the [District Commissioner](#), paying the appropriate fees and agreeing to the terms and conditions as set within the guidelines.

Multiple bookings are possible for different parts of the property at the discretion of the District Commissioner.

Any damage will be assessed and charged to the hirer.

All equipment hired or loaned by the Association must be treated with care, properly maintained during use and returned in the same condition in which it was supplied.

Fees:

Hirer	Fee
Scouts\Guides	\$7.00 per person per night
Not for Profits (Churchs, Youth Groups etc..)	\$125 hirers fee and \$7.00 per person per night
Business\For profit	\$125 per day hirers fee and \$7.00 per person per night
** Prices negotiable with large groups ask the District Commissioner for more information	

Buildings and Amenities

General Conditions of use:

- Please do not waste power, turn off lights and flood lights when not in use.
Electricity is the single biggest expense to our park.
- All buildings used must be clean and tidy prior to departure.
- COVID rules and cleaning to be undertaken.
- Close all doors and windows prior to departure.
- Tables and chairs to be put away and returned to original locations.
- All damages and malfunctions to be reported to Management as soon as possible.
- All breakages, damages and losses are the hirers responsibility and will be charged to the hirer account.
- It is a requirement that the kitchen(s) be mopped out, refrigerators / freezers cleaned out and nothing left in them, and refrigerators / freezers left running. All utensils to be cleaned and placed back into their respective places.

Camp Petrel

- Scout storage room to the left of the main entrance is no access to general hirers.
- Kitchen is to be left spotless with all food removed from the fridges.
- Kitchen to be mopped after every use.
- Cold room is to be left empty after uses, please limit the amount of times the door is opened.
- Air-conditioned Computer room is available for use, please limit the use of the air conditioner to the period of actual use.
- Projector, Speakers and Screen is available for use in the computer room.
- Girls Toilets have Instant Hot Water with Gas, please let us know if the water runs cold!
 - Management will come and change the Gas bottles for you.
- Boys Toilets have an electric storage hot water system. They are on a push button timer. There is an appendix with more information how to use.

Camp Petrel Dorms

- 48 beds, 3 bunks per room, 8 rooms.
- Dorms are to be inspected before use.
- Dorms are to be cleaned after use, beds wiped, and floors cleaned.
- Left over items will be donated to charity.
- **BUNK BEDS**

- To comply with the Fair Trading (Safety Standards) 2011, the Australian Standard AS/NZS
- 4200:2012 “Bunk beds and other elevated beds” and Scouts Queensland Policy:
- Joey Scouts and Cub Scouts MAY NOT use the upper bunks, irrespective of age.
- Non- Scout Occupants: Only persons 9 years of age and over may use the upper bunk beds.
- NO PLAYING ON BUNKS AT ANY TIME

Rudd Hut (behind Camp Petrel) Access by request

- Storage of Scout Equipment, Maintenance equipment and general Hire gear
- BBQ available Gas Bottle not supplied
- Marquees available for use, Hirer responsible for any damage
- Extra Tables available

Brown Hut

- Basic Kitchen facilities, to be cleaned after use.
- Building to be secured when leaving.
- Scout Archive Compactus off limits
- Tables\Chairs to be returned to original location when finished.

Brown Hut Toilet Showers

- Girls\Leaders Toilets have an electric storage hot water system. They are on a push button timer. There is an appendix with more information how to use.
- The Shower Block has an Instant Hot Water with Gas, please let us know if the water runs cold!
 - Management will come and change the Gas bottles for you.
- The Boys Toilets is the older white demountable.

Arunga Shed

- Large under cover area to be kept clear for use.
- Do not store any items inside the closed end.
- There are bright LED Flood lights that point in all directions, they are labelled inside the closed end of Arunga Shed.

Ablutions

- We use a septic system - please do not flush any products other than toilet paper. Anything else clogs the system and is expensive to repair.
- Toilets and showers are to be cleaned Daily and prior to departure.
- The hand basins and toilet bowls to be cleaned.
- All rubbish to be placed in the wheely bins
- Hand washing liquids, dish washing liquids, toilet paper are to be refilled after use.
- Toilet rolls will be on the holder when you arrive, and we expect that will be the situation when you leave.
- For safety, it is okay to leave lighting on in the ablution block during the night.
- Please ensure that the lights are turned off during the day and prior to departure.

Campsites

- There are 2 main campsites at Seeonee Park, with Camp Petrel and Brown hut being the 2 main areas. Brown Hut being the larger cleared area for Camping. Several hundred people can camp at Brown Hut side. These 2 sites have Toilet and Water access.
- There are many other locations at Seeonee Park to Camp that do not have toilet or water access. These areas need a plan in place to manage these issues if you plan on using them.
- Where possible always use designated fireplaces and the campfire area. Seek approval from Management for other areas if required. Strict rural fires regulations apply to our property and must be observed.
- Campsites are to be left clean and tidy along with the clearing of all obstructions including temporary fireplaces and firewood to allow a clear path for mowing without endangering machinery or operators.

Drugs and Alcohol

- Smoking is prohibited in all buildings, and within 4 metres of any building entrance on Seeonee Park Scout Campsite.

- It is widely accepted that smoking is potentially harmful to health, and all Leaders and adults in Scouting should bear this in mind in relation to Youth training. As an appropriate example and for health reasons, Leaders/Youth Members over 18 years of age will not smoke in the presence of Youth Members.
- All users of Seeonee Park Scout Campsite must adhere to the Scouts Australia, Queensland Branch Inc. ruling in relation to the consumption of alcohol. The consumption of alcoholic beverages and other performance affecting drugs by participants prior to or during a day-to-day or adventurous activity is prohibited. (refer to Queensland Branch Scouting Instructions [Q.B.S.I.] if required).
- The possession and or use of any banned or illegal substances is strictly prohibited

Emergency Procedures

RING 000

Location:

Seeonee Park Scout Campsite
399 Yeppoon Road
Limestone Creek 4701

Have someone waiting at the gates to guide them in.

Contact District Commissioner Scott Neill 0488008897 after the emergency services

- Emergency Evacuation plans are on display in all buildings.
- Camp Petrel Emergency point is the Car Park
- Brown Hut Emergency point is out the front of Arunga Shed
- The Leader / Person in charge (or their delegate) is responsible safe evacuation of their group.

Firearms

- Firearms or any other offensive weapons are strictly prohibited.

Plants and Animals

- Seeonee Park Scout Campsite is a designated flora and fauna park hence green timber may not be cut or damaged without prior approval.
- Please do not handle or feed the wildlife, they live here in their natural habitat and enjoy good health. Please do not upset their lifestyle.

Rental Property at the front of Seeonee Park

- There is a rental property at the front of Seeonee Park.
- It is not a caretakers cottage.
- It is managed by a real estate company with the rent used to support the Scout Park.
- No access by hirers of the park

Incidents

- Scouting: All incidents must be reported and documented as per Queensland Branch Scouting Instructions
- Non-Scouting: An incident report is to be completed in duplicate with the original left with Management covering any accident / incident on the property at any time.

Noise

- Seeonee Park Scout Campsite is situated in a semi-rural suburban environment. Our neighbors are residential and the area has generally low ambient noise level.
- The occasional noise complaint has been received, Respect other people using the Park as well as our neighbors – keep noise levels down (to conversation level) after 9:30pm.
- Multiple activities are encouraged across Seeonee Park Scout Campsite, Each party is to ensure they observe the privacy of other users and not infringe upon other tenants' sites / activities without their respective permission.

Parking

- Ensure that all roadways and tracks are clear at all times. Please do not park vehicles to obstruct access to the track/road system or other designated no go or no parking areas (this

- includes the Parade Ground).
- Tracks must remain clear for emergency vehicle entry at all times.

Pets

- Seonee Park Scout Campsite is a designated flora and fauna park hence no pets are allowed.

Refuse\Rubbish

- Several Wheelie Bins are provided and available for your use.
- Camp Petrel – Place used wheely bins at the front of the road near Camp Petrel
- Brown Hut – Please leave where they are located, Management will organise these to be transported to the front.

Water

- Camp Petrel is supplied by a town water supplied water tank.
- Brown Hut is rain water where marked if not it is bore water as indicted by Yellow taps.
- There is a Bore at Camp Petrel that supplies the brown hut water tank at the top of Altar hill.
- Creek water is not for drinking.

Your co-operation in adhering to these rules is greatly appreciated. Any persons found to be in contravention of any of the above mentioned “Rules for the use of Seonee Park Scout Campsite” could be directed to vacate the property.

We hope you enjoy your stay

FOR ALL EMERGENCIES

CONTACT 000

FIRE – POLICE –

AMBULANCE

LOCATION:

SEENEE PARK SCOUT CAMPSITE
399 YEPPON ROAD
LIMESTONE CREEK QLD 4701

HAVE SOME ONE WAITING AT THE GATE TO SHOW THEM TO THE EMERGENCY SITE

After Emergency

Contact: District Commissioner (Leader in Charge)
Scott Neill
0488008897
dc@capricorn.scoutsqld.com.au

PROPERTY DAMAGE \ REPAIRS NEEDED

Contact: District Commissioner (Leader in Charge)
Scott Neill
0488008897
dc@capricorn.scoutsqld.com.au
Send a photo of the damage\repairs needed

It is important to report damage accidental or otherwise to Leader in Charge of Seenee Park Scout Campsite. There may be another group after your group that might need to use the damaged property, it also might pose a hazard to other users of the park.

Appendix:

Camp Petrel Boys Toilets Hot Water:

On the back end of the toilet block next to the hot water system, there is a Switch and a waterproof Case.

Leave the switch On.

To activate the hot water, open the waterproof case, and push the grey button on the left. It may take a couple of hours to heat.

It is a 48Hr timer so for bookings longer than a weekend, you may have to push this more times.



Brown Hut Leaders and Girls Toilets Hot Water:

Inside the doorway of the Girls Toilets to the left, there is a Main Board and a White Circuit Box.

To activate the hot water and push the grey button on the left. It may take a couple of hours to heat.

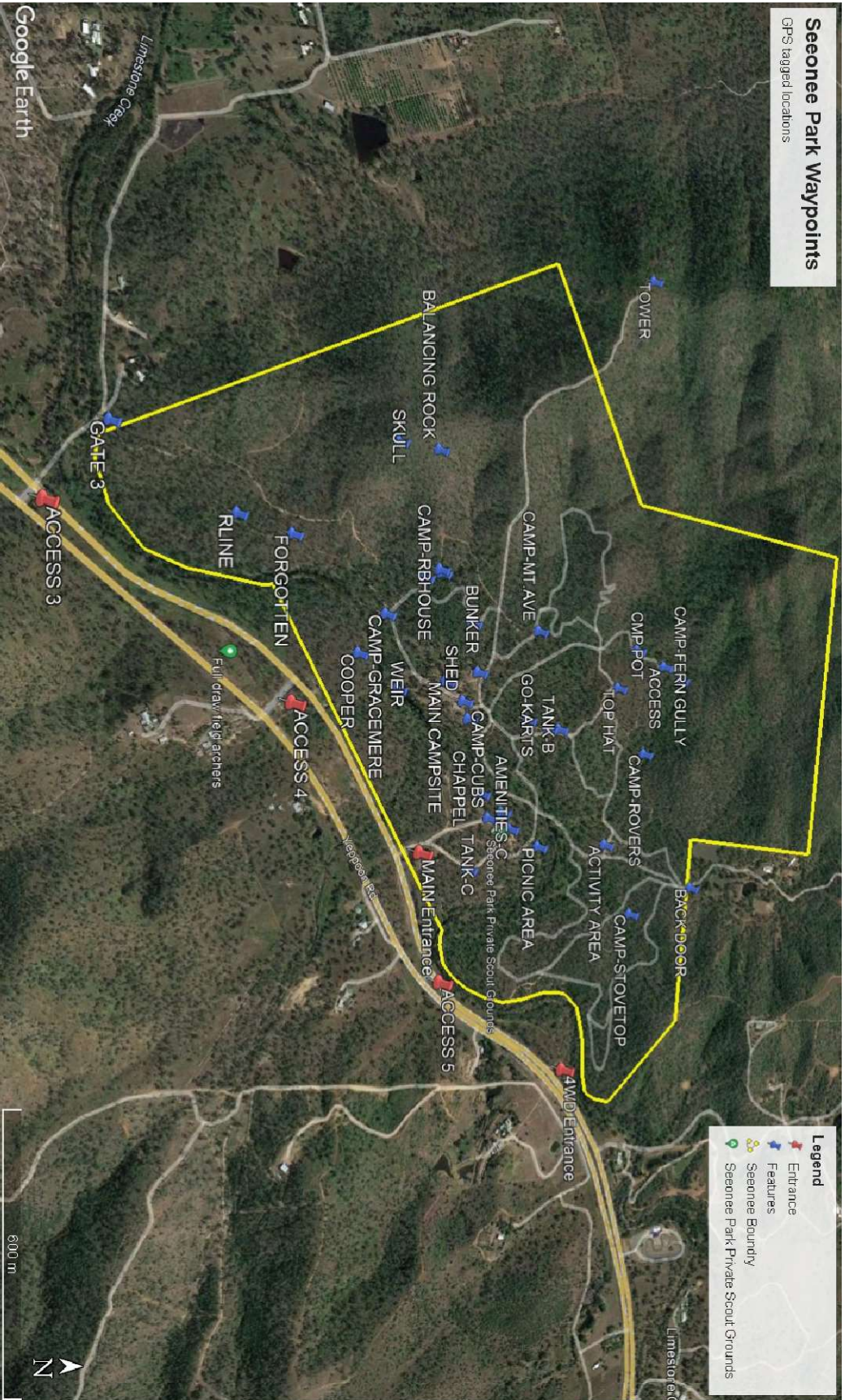
It is a 48Hr timer so for bookings longer than a weekend, you may have to push this more times.



Brown Hut Brick Shower Block.

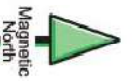
In the Brick Shower block, the side with the Girls Showers there is a power board that controls the power for this building, to access lights and the hot water, turn this power on. It is to be done by an Adult. Open the case and flick the switches on. Turn Off when you leave campsite.





Seeonee Park

Scale 1:7500
Contour interval 5m



Scale 1:7500
0 50 100 150 metres

Map prepared by Graham Teahan July/August 2013
for the Orienteering Association of Queensland
Basemap: Rockhampton Regional Council

Legend	
	Contour
	Fornline
	Knoll
	Depression
	Earthbank
	Stoney ground
	Paved building platform
	Highway
	Major Vehicle Track
	Vehicle Track
	Minor vehicle track
	MTB/Bike/footpath
	Small Footpath
	Indistinct Path
	Building
	Canopy/verandah
	Forbidden access
	Fence
	High Fence
	Crossing Point
	Manmade Feature
	Monument, chapel
	Tower/light pole
	Chif' Rockface
	Wall
	Boulder - small, large
	Boulder cluster, field
	Bare rock
	Rocky ground
	Marsh
	Watercourse, Lake/river
	Open Land
	Rough Open Land
	Open Land with Scattered Trees
	Rough Open with Scattered Trees
	Sandy ground - open
	Sandy ground - forest
	Flight
	Walk - Poor visibility
	Walk - Good visibility
	Slow run - Poor visibility
	Slow run - good visibility
	Forest - easy run
	Vegetation
	Boundary
	Distinctive Tree
	Small tree, Stump